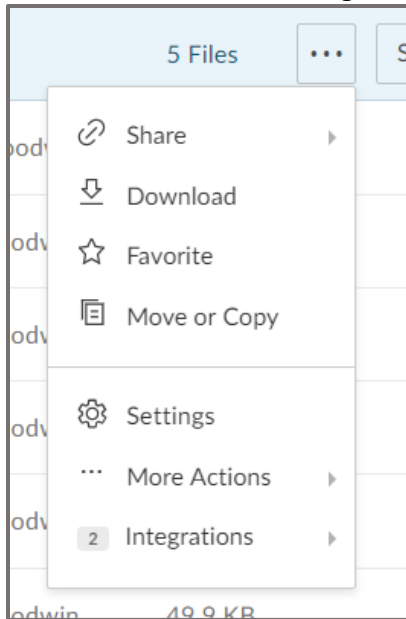
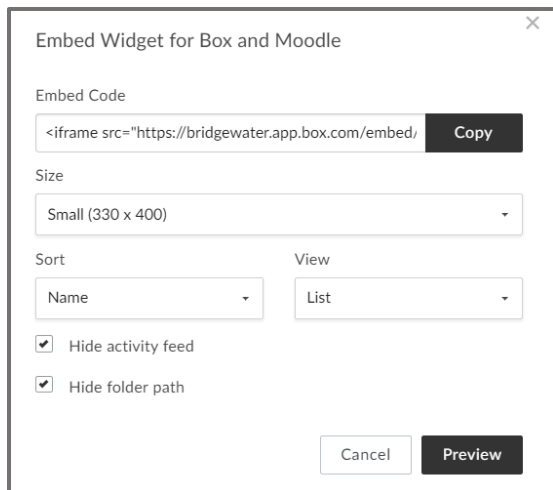


Embedding a Folder from Box into Moodle:

- Go to Box and navigate to the folder you would like to embed into Moodle.
- Click on the three dots to get more options



- Select *More Actions* from the menu.
- Select *Embed Widget*.
- Set up the size, the way you would like the items in the folder to sort (by date or name), and how the items will view (grid or list).
- If you want to hide the activity feed and the folder path, check the boxes in front of Hide activity feed and Hide folder path. (People who access the embedded folder will ONLY have access to the folder and the items in the folder, NOT all of your files.)
 - If you would like to see a preview, click preview.

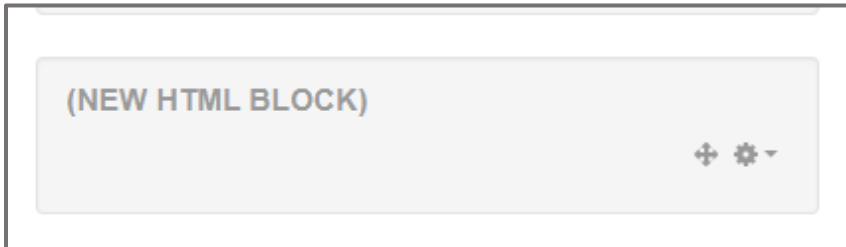


- Click *Copy* to copy the embed code.
- Go to Moodle and navigate to the course for which you want to embed the folder.
- Turn on editing.

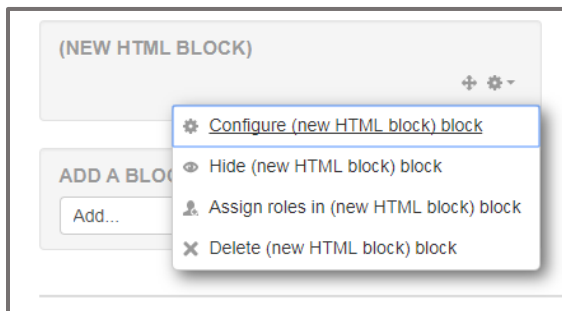
- Find the Block that is called Add Block. (Depending on the themes, this block is in different locations.)



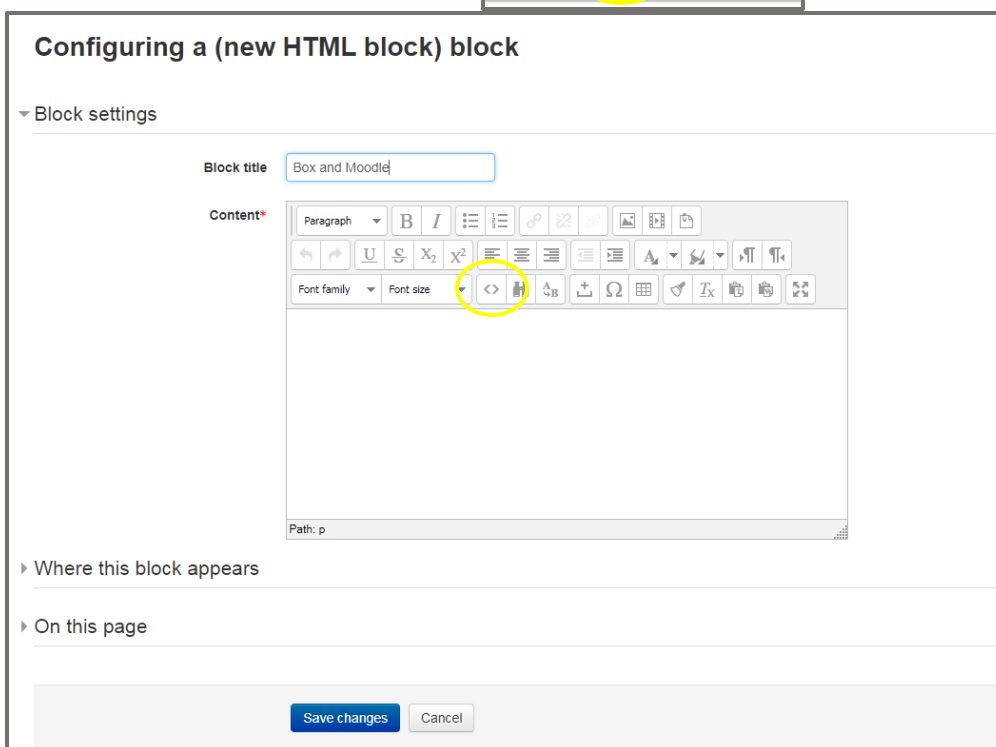
- Select HTML from the list of options.
- Scroll to the new HTML Block. (Again, depending on the theme, this block will be in different locations.)



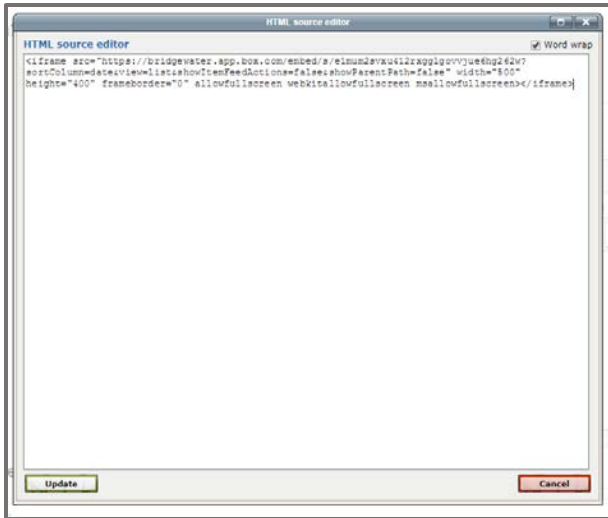
- Click on the settings icon and select Configure (new HTML block) block.



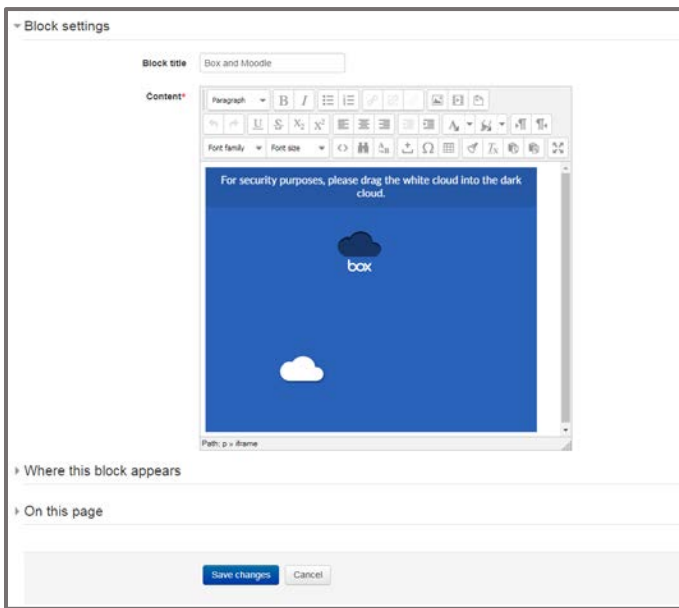
- Add the Block name.
- Click on the HTML code icon.



- Paste the embed code from the folder in Box and click update.



- Your Box folder will appear. (For security purposes, the dragging of the cloud will always appear first.) Click Save.



- You will see your Box folder embedded into your Moodle course. Once the cloud is moved and dropped in the proper location by the person viewing the Moodle page (you or your students), he or she will be able to view the contents of that folder. NOTE- you will see all of your files, but your students will only have access to that folder and its contents, NOT all of your files.

